
EDDY
REFRIGERATORS

1925

EDDY REFRIGERATORS



SEVENTY-EIGHTH YEAR

1847—1925

“The Father of Them All”



Designed and Manufactured only by

D. EDDY & SONS COMPANY
(DORCHESTER DISTRICT), BOSTON 22, MASS.

FACTORY: CORNER OF ADAMS AND GIBSON STREETS
OFFICE: 886 ADAMS STREET

FACTS

WITH the issuance of this catalogue, D. Eddy & Sons Co. enter upon their seventy-eighth year in the business of making refrigerators.

It was in 1847, in old Dorchester, that the foundation was laid, by D. Eddy, of a business which today is the leader of its industry. The Eddy Refrigerator was the first refrigerator built. All the worth-while improvements in refrigerators since then have been pioneered by D. Eddy & Sons Co. A policy of painstaking progressiveness has created for the Eddy a country-wide fame as the highest quality refrigerator on the market.

In every industry is a logical leader — some firm whose name symbolizes success — some firm which is supreme in its field. In the manufacture of refrigerators such leadership has been attained by the Eddy. Today it holds the "blue ribbon" of its industry.

The Eddy Refrigerator is not merely the oldest refrigerator made,—it is the best. Thus the name Eddy has come to be recognized as a quality mark.

When a man puts his heart and soul into his work it speaks well for the man and for the work, too. No real man wastes his energies over work that is frivolous and of little account. In constructing the first refrigerator, Mr. D. Eddy did his work with zeal, enthusiasm and conscience, because these qualities reflected the character of the man. A man's work is his medium of self-expression. The worthier the work, the more worthy must be he who performs it.

The best, and the best only, was Mr. D. Eddy's ideal and his motto. It was on this basis of "best" that the business was founded. And by constant and

consistent pursuit of this policy of "best," the business has become a dominant factor in its field.

The reputation and standing of the Eddy Refrigerator today is a tribute to the ability of Mr. D. Eddy, his sons and grandsons as leaders and business men. Steadfast adherence to quality standards has been and is an outstanding characteristic of their management.

Seventy-eight years of service demands not less but more and better service from this firm in every added year. To live up to its past reputation is not enough. To surpass itself is today the ideal of D. Eddy & Sons Co., as it was when its work began — seventy-eight years ago.

FACTS ABOUT THE EDDY

In constructing the Eddy Refrigerator, the basic principle was, and is, to confine the cold inside, rather than have the warmth drawn out by a greater surrounding coolness outside. Owing to the soundness of this principle, the Eddy was a pronounced success from the start. It has always been, as it is now, the leading American refrigerator; and to lead America in this respect is to lead the world.

WHITE PINE — WHY?

Eddy Refrigerators are built of white pine, a wood which has no superior for the purpose. It is a poor conductor of heat. Only the best grade of white pine stock is used in the Eddy. This combined with skilled workmanship explains why the Eddy lasts a lifetime. Eddy Refrigerators forty years old and still in active service are not unusual.

EDDY INSULATION

Insulation in the Eddy is reinforced by a special felting. Nothing more effective has ever been found.

In connection with the dead-air space between the walls, the special felting provides perfectly against the escape of cold air. Thus the Eddy is unapproached for its completeness and economy. The ice melts slowly, and chills more effectively. The additional first cost in the purchase of an Eddy is one of the best investments a purchaser can make. A cheap refrigerator is cheap for one day only,—the day it is bought. Its maintenance creates extra expense that the extra first cost of the Eddy would have saved. The Eddy special felting stays in place, and is as thoroughly dependable as every other part of the refrigerator.

AIR-TIGHT EVERYWHERE

The Eddy is air-tight everywhere. It is lined with heavy metal, soldered in every seam. Solder and metal are absolutely non-absorbent. As no moisture can penetrate either, the formation of mould on the back of the lining is impossible. Eddy linings will not chip, crack, or break. No dirt or germs or smell or mustiness can lodge in them. All a good housekeeper need ever do to the Eddy is to clean it with soap and water once a week, and dry it out; and no good housekeeper can ever do less with any refrigerator.

SHELVES

Eddy shelves are made of wire and slate. They clean easily, and add to the appearance of the Eddy.

ICE RACKS

The Eddy ice rack is of galvanized steel. It is readily taken out and cleaned, and it cannot be broken. The waste pipe and trap are easy to take out, clean, and put back. As the tendency of cold air is to sink, the Eddy waste pipe is built to prevent its escape, and to preclude the entrance of warm air from outside.

THIS IS IMPORTANT

You will observe that the doors are raised an inch, or more above the inside floors. Thus the cold air, sinking to the bottom, does not escape when the doors are opened. The doors are double covered; that is, they are insulated like the walls, thereby preventing the escape of any coldness through them. Eddy doors are, of course, air-tight.

Moisture from the melting ice has no effect on the contents of the food chambers of the Eddy. They are moisture-proof. The Eddy system ensures a continuous circulation of cold, dry air through the food chambers,—an absolute essential of scientific refrigeration. Dampness is the first cause of decay and mould. Dry air is as requisite in a refrigerator as cold air. No food can be kept in an atmosphere of moisture. The completeness with which this principle of the Eddy has been worked out has been largely responsible for the Eddy's uninterrupted success.

The great volume of production, the specialized methods of manufacture, and the ease with which the product is sold, owing to its reputation and its obvious high quality, enable the Eddy to offer by far a greater value than would be otherwise possible. In principle, material, workmanship, and results, the Eddy dominates.

To keep food as it ought to be kept, to preserve it with the least waste, in the most wholesome way, with absolute safety, economy, and perfection of refrigeration, is the year-in and year-out service each Eddy Refrigerator is prepared to give its owner.

Look For This Label

This Eddy registered Trade Mark Label is placed on all Refrigerators leaving our factory



It identifies the original and only genuine Eddy, and signifies that you have a refrigerator superior to all others

EDDY REFRIGERATORS CAN ALSO BE USED FOR ELECTRICAL REFRIGERATION



Style of Nos. 515 and 516

EDDY WHITE REFRIGERATOR

The lining is made absolutely in one piece, with rounded corners. The pans on the provision doors are of the same material. Electric welded Wire Shelves. Thick Walls. Steel Ice Rack. Brass Locks. The small compartment under the ice chamber is intended especially for butter and milk.

Both sizes contain three shelves.

OUTSIDE DIMENSIONS AND PRICES

No.	Length	Depth	Height With Casters	Ice Capacity	Shipping Weight	Price
515	35 inches	20 $\frac{1}{2}$ inches	45 inches	70 lbs.	220 lbs.	\$99.00
516	37 "	21 $\frac{1}{2}$ "	48 "	85 "	245 "	111.00

PRICES SUBJECT TO DISCOUNT



Style of Nos. 517, 518 and 520

EDDY WHITE REFRIGERATOR

The No. 517 is a one-piece lining. The Nos. 518 and 520 are made in sheets with U bottom. The pans on the provision doors are of the same material. Electric welded Wire Shelves. Thick Walls. Steel Ice Rack. Brass Locks. The small compartment under the ice chamber is intended especially for butter and milk. The No. 517 contains four shelves; No. 518 contains five shelves; No. 520, five shelves.

OUTSIDE DIMENSIONS AND PRICES

No.	Length	Depth	Height With Casters	Ice Capacity	Shipping Weight	Price
517	39 inches	22½ inches	52 inches	105 lbs.	290 lbs.	\$130.00
518	41½ "	23½ "	53 "	125 "	315 "	170.50
520	45½ "	26 "	62 "	240 "	410 "	220.00

PRICES SUBJECT TO DISCOUNT



Style of No. 554

EDDY WHITE REFRIGERATOR

The lining is made absolutely in one piece, with round corners. The pan on the provision door is of the same material. Electric welded Wire Shelves. Thick Walls. Steel Ice Rack. Brass Locks. The ice is put in at the top. Double covers to the ice chamber.

OUTSIDE DIMENSIONS AND PRICE

No.	Length	Depth	Height With Casters	Ice Capacity	Shipping Weight	Price
554	30½ inches	21 inches	46 inches	85 lbs.	195 lbs.	\$77.00

PRICE SUBJECT TO DISCOUNT

RULES FOR THE USE OF EDDY REFRIGERATORS

Do not keep refrigerator in cellar or other damp location.

The floor where a refrigerator stands should be **perfectly level**.

New refrigerators should stand from **twelve to twenty-four hours**, with doors shut, after the ice chamber is filled, before any articles of food are placed in them.

Keep the strainer over the water outlet inside the refrigerator, so as to prevent the escape of cold air through waste pipe.

The **ice compartments should be well filled** at first, so that the refrigerator may become thoroughly cooled, and should be kept full, or nearly so, not only to better preserve the food, but as a matter of economy, as a small quantity of ice melts rapidly.

The **ice should be washed and put in with care**. It should never be covered or wrapped in anything, as that prevents the circulation of cold air and gathers impurities.

The **ice compartment is for ice**, not food.

Never place food in the refrigerator in a warm state—it will cause moisture. Food should never be kept in a refrigerator without ice, with covers or doors closed.

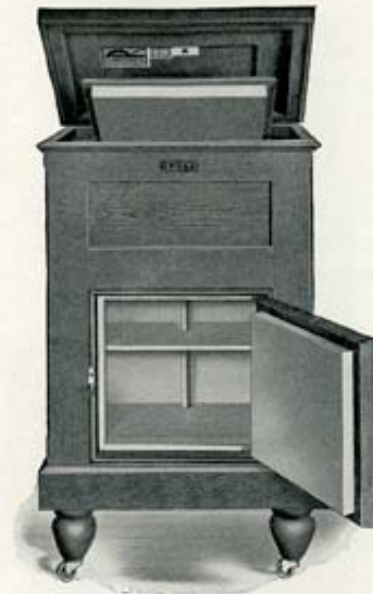
Butter tubs and boxes should rest on a shelf or dish if possible.

Do not leave the covers or doors open or slightly ajar.

Never put chemicals of any kind in the refrigerator, and do not use potash, soda, or ammonia in cleaning.

Wash the lining once a week with soap and warm water, and wipe perfectly dry. Pour hot water into the waste pipe that it may clean the slime which accumulates from the ice.

EDDY REFRIGERATORS LEAVE THE FACTORY PERFECTLY CLEAN. THEY WILL REMAIN SO INDEFINITELY IF THESE DIRECTIONS ARE FOLLOWED.



Style of No. 42

EDDY REFRIGERATOR

The ice is put in at the top. Zinc Lining. Double Covers to the Ice Chamber. Thick Walls. Steel Ice Rack. Brass Lock.

OUTSIDE DIMENSIONS AND PRICE

No.	Length	Depth	Height With Casters	Ice Capacity	Shipping Weight	Price
42	25½ inches	19 inches	42½ inches	40 lbs.	135 lbs.	\$41.75

PRICE SUBJECT TO DISCOUNT



Style of Nos. 43 and 44

EDDY REFRIGERATOR

The ice is put in at the top. Zinc Lining. Double Covers to the Ice Chamber. Thick Walls. Steel Ice Rack. Brass Lock.

OUTSIDE DIMENSIONS AND PRICES

No.	Length	Depth	Height With Casters	Ice Capacity	Shipping Weight	Price
43	28½ inches	20 inches	45 inches	60 lbs.	155 lbs.	\$52.75
44	31½ "	21 "	46½ "	80 lbs.	185 "	62.75

PRICES SUBJECT TO DISCOUNT



Style of No. 52

EDDY REFRIGERATOR

Ice at the top. Opening to Ice Chamber in front. Zinc Lining. Thick Walls. Steel Ice Rack. Brass Locks. Fitted with heavy Piano Casters. Two Provision Compartments. Butter and milk should be kept in left-hand compartment.

OUTSIDE DIMENSIONS AND PRICE

No.	Length	Depth	Height With Casters	Ice Capacity	Shipping Weight	Price
52	39 inches	23 inches	56½ inches	160 lbs.	300 lbs.	\$115.50

PRICE SUBJECT TO DISCOUNT



Style of No. 55

EDDY REFRIGERATOR

With bottle closet in top, next to ice. Zinc Lining. Opening to Ice Chamber in front. Thick Walls. Steel Ice Rack. Brass Locks. Fitted with heavy Piano Casters. Butter and milk should be kept in left-hand compartment.

OUTSIDE DIMENSIONS AND PRICE

No.	Length	Depth	Height With Casters	Ice Capacity	Shipping Weight	Price
55	56½ inches	28 inches	64 inches	290 lbs.	560 lbs.	\$214.50

PRICE SUBJECT TO DISCOUNT



Style of Nos. 57 and 59

EDDY REFRIGERATOR

Zinc Lining. Thick Walls. Steel Ice Rack. Brass Locks. Piano Casters. Ice Chamber at the top. Three Provision Compartments. The upper left-hand compartment, being separated, is intended especially for butter and milk.

The No. 57 contains five shelves.

The No. 59 contains seven shelves. The Ice Chamber in the No. 59 is deep enough to contain a 22-inch cake of ice.

OUTSIDE DIMENSIONS AND PRICES

No.	Length	Depth	Height With Casters	Ice Capacity	Shipping Weight	Price
57	42 inches	23 inches	60½ inches	190 lbs.	345 lbs.	\$146.75
59	48 "	29 "	68½ "	350 "	510 "	211.75

PRICES SUBJECT TO DISCOUNT

EDDY REFRIGERATOR

The cut on opposite page represents our No. 83 Refrigerator and shows the arrangement of shelves, etc. Zinc Lining.

The Ice Chamber is fitted with a solid covered Ice Rack. The Provision Chamber is divided into three compartments. The one on the right, being the full height of the compartment, but having two doors, is entirely separate from the two on the left. The upper left-hand compartment is intended for butter and milk, and is separate from the lower, thus making all three separate from each other. This refrigerator is constructed in the most thorough and substantial manner. Fitted with surface Brass Locks and heavy Piano Casters. Where as large a refrigerator is required, this size is desirable, as it permits of keeping the various kinds of food separated.

OUTSIDE DIMENSIONS AND PRICE

No.	Length	Depth	Height With Casters	Ice Capacity	Shipping Weight	Price
83	46½ inches	29½ inches	79 inches	450 lbs.	685 lbs.	\$268.50

PRICE SUBJECT TO DISCOUNT

All refrigerators built by us are insulated with Eddy's Absolute Non-Conductor, and when carefully used will last a lifetime.

“THE NATIONAL FOOD SAVER”

EDDY REFRIGERATOR



Style of No. 83

EDDY REFRIGERATOR

The cut on opposite page represents our No. 84 Refrigerator, which is of the same general construction, arrangement, etc., as No. 83 on preceding page, but is somewhat larger. Zinc Lining.

The right-hand Provision Compartment is fitted with six meat hooks, and, having a door the whole length, is very desirable if one wishes to hang up large pieces of meat, etc. It is also fitted with shelves so that it may be used for smaller articles if desired. It is fitted with heavy Piano Casters. The doors are fitted with **brass levers**. It is an excellent refrigerator for camps, clubs or restaurants.

OUTSIDE DIMENSIONS AND PRICE

No.	Length	Depth	Height With Casters	Ice Capacity	Shipping Weight	Price
84	48 inches	29½ inches	85 inches	500 lbs.	725 lbs.	\$297.00

PRICE SUBJECT TO DISCOUNT

All refrigerators built by us are insulated with Eddy's Absolute Non-Conductor, and when carefully used will last a lifetime.

“QUALITY FIRST AND ALWAYS”

EDDY REFRIGERATOR



Style of No. 84

EDDY REFRIGERATOR

Suitable for

HOTELS, RESTAURANTS, CLUBS

or

LARGE FAMILIES

The cut on opposite page represents our No. 85 Refrigerator. It shows the different compartments and the arrangement of shelves, etc. Zinc Lining. The Ice Chamber is fitted with a solid covered Ice Rack. The Provision Chamber is divided into four compartments, each entirely separate from the others. It is impossible for the food in one compartment to absorb any taste or odors from food in the others. The upper left-hand compartment is intended especially for milk and butter when it is in uncovered receptacles, and the one beneath it for the same articles in cans, bottles, boxes or tubs; the long middle compartment for cooked foods, etc.; the right-hand long compartment for general supplies. The different compartments can be used, however, to suit the convenience of the user. Bottled goods may be kept in any of them. This refrigerator is constructed in the most thorough and substantial manner. Fitted with surface Bronze Locks and heavy Piano Casters.

OUTSIDE DIMENSIONS AND PRICE

No.	Length	Depth	Height With Casters	Ice Capacity	Shipping Weight	Price
85	61½ inches	29½ inches	77½ inches	700 lbs.	865 lbs.	\$364.00

PRICE SUBJECT TO DISCOUNT

All refrigerators built by us are insulated with Eddy's Absolute Non-Conductor, and when carefully used will last a lifetime.

"THE ACME OF PERFECTION"

EDDY REFRIGERATOR



Style of No. 85

Eddy THREE-IN-ONE Refrigerator

The cut on opposite page represents our No. 87 Refrigerator. It shows the general arrangement of the interior. It is constructed in the most thorough and substantial manner. Zinc Lining. Fitted with solid covered Ice Rack. Surface Brass Locks. Heavy Piano Casters. This refrigerator has two entirely separate Ice Chambers. By using both, you cool all three Provision Compartments. By using the larger or right-hand Ice Chamber only, you cool the middle and right-hand Provision Compartments, and each of these two is entirely separate from the other. By using the smaller or left-hand Ice Chamber only, you cool only the left-hand Provision Compartment. As described above, you have a refrigerator of three sizes in one. It can be used as a very large, medium or small size, according to the season or one's wants at various times. It will be especially desirable for those obliged to have a large refrigerator for a part of the year and then have use only for a small one the balance. In such cases it will soon save its cost in the amount of ice saved. Following are suggestions for the general arrangement of the food. If the whole refrigerator is used, the left-hand Provision Compartment is especially good to keep milk, butter and any sensitive articles of food; the middle compartment for cooked foods, etc., and the right-hand compartment for general supplies. Bottled goods can be kept in either. Never keep food in the compartments that are not cooled.

OUTSIDE DIMENSIONS AND PRICE

No.	Length	Depth	Height With Casters	Ice Capacity	Shipping Weight	Price
87	66½ inches	29½ inches	77½ inches	675 lbs.	980 lbs.	\$401.50

PRICE SUBJECT TO DISCOUNT

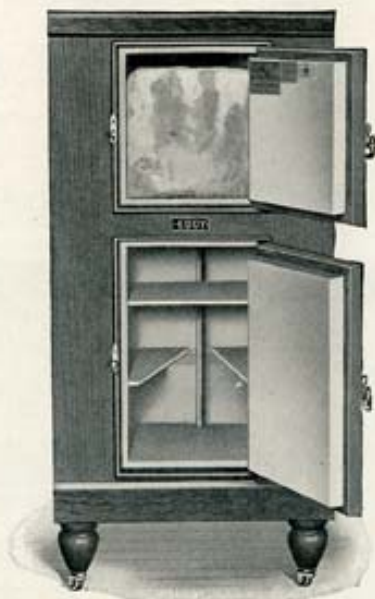
All refrigerators built by us are insulated with Eddy's Absolute Non-Conductor, and when carefully used will last a lifetime.

"KEEP PERFECTLY COOL"

Eddy THREE-IN-ONE Refrigerator



Style of No. 87



Style of Nos. 60 and 61

Eddy Apartment House Refrigerator

Zinc Lining. Thick Walls. Steel Ice Rack. Brass Lock.

This refrigerator is more particularly adapted for Apartment Houses where the recess is high and narrow. The No. 61 contains four shelves and the No. 60 three shelves.

OUTSIDE DIMENSIONS AND PRICES

No.	Length	Depth	Height With Casters	Ice Capacity	Shipping Weight	Price
60	25 inches	20 inches	52½ inches	55 lbs.	175 lbs.	\$61.00
61	27 "	22 "	59½ "	100 "	220 "	80.75

PRICES SUBJECT TO DISCOUNT



Style of No. 30

EDDY

Pantry Refrigerator

Also Suitable for Bachelor Apartments

Zinc Lining. Thick Walls. Steel Ice Rack. Brass Locks.

This is a very convenient refrigerator for a china closet or butler's pantry. The Ice Chamber is large enough for a few bottles to be kept on the ice. If it is too high to go under your shelf, you can gain 1½ inches by removing the casters.

The No. 30 contains two shelves.

OUTSIDE DIMENSIONS AND PRICE

No.	Length	Depth	Height With Casters	Ice Capacity	Shipping Weight	Price
30	33 inches	18½ inches	34 inches	55 lbs.	125 lbs.	\$44.00

PRICE SUBJECT TO DISCOUNT



Style of No. 26

EDDY REFRIGERATOR

Zinc Lining. Thick Walls. Steel Ice Rack. Brass Locks.
The small compartment under the Ice Chamber is intended especially for butter and milk.

OUTSIDE DIMENSIONS AND PRICE

No.	Length	Depth	Height With Casters	Ice Capacity	Shipping Weight	Price
26	34½ inches	19½ inches	42½ inches	80 lbs.	170 lbs.	\$61.00

PRICE SUBJECT TO DISCOUNT



Style of Nos. 32, 33, 34, 35 and 36

EDDY REFRIGERATOR

This refrigerator is of the same general construction as that on preceding page, with the exception of the opening to the Ice Chamber, which is in front instead of on top. The small compartment under the Ice Chamber is intended especially for butter and milk. Zinc Lining.

The Nos. 32, 33 and 34 contain three shelves each.

The Nos. 35 and 36 contain four shelves each.

OUTSIDE DIMENSIONS AND PRICES

No.	Length	Depth	Height With Casters	Ice Capacity	Shipping Weight	Price
32	33 inches	18½ inches	40½ inches	40 lbs.	155 lbs.	\$54.50
33	35 "	19½ "	42 "	60 "	170 "	61.00
34	37 "	20½ "	44 "	80 "	185 "	69.25
35	39 "	21½ "	46 "	100 "	215 "	78.00
36	41½ "	22½ "	48½ "	125 "	240 "	90.25

PRICES SUBJECT TO DISCOUNT



Style of Nos. 37, 38 and 39

EDDY REFRIGERATOR

Zinc Lining. Thick Walls. Steel Ice Rack. Brass Locks. This refrigerator is of the same interior arrangement as that shown on preceding page, but being larger, it is constructed with four doors. The No. 37 contains four shelves, the No. 38 five shelves, the No. 39 six shelves.

OUTSIDE DIMENSIONS AND PRICES

No.	Length	Depth	Height With Casters	Ice Capacity	Shipping Weight	Price
37	42½ inches	23½ inches	52½ inches	185 lbs.	280 lbs.	\$117.75
38	43½ "	25 "	55½ "	175 "	325 "	128.75
39	46½ "	27½ "	62 "	250 "	435 "	159.50

PRICES SUBJECT TO DISCOUNT



Style of Nos. 1 to 9, inclusive

Eddy Chest Refrigerator

Zinc Lining. Ice at the bottom. Outside and Inside Covers. Thick Walls. Steel Ice Rack and Lock. The material used in the construction of our Chest Refrigerators is of the same quality as used in the other styles. The inside cover of the No. 9 is in two parts.

OUTSIDE DIMENSIONS AND PRICES

No.	Length	Depth	Height With Casters	Shipping Weight	Price
1	24½ inches	18½ inches	27½ inches	85 lbs.	\$20.50
2	28½ "	19½ "	28½ "	100 "	24.50
3	32½ "	20½ "	29½ "	120 "	29.50
4	34½ "	21½ "	30½ "	130 "	34.75
5	36½ "	22½ "	31½ "	150 "	38.25
6	38½ "	23½ "	32½ "	165 "	43.00
7	42½ "	24½ "	33½ "	185 "	50.00
8	46½ "	26½ "	35½ "	230 "	59.50
9	51½ "	30½ "	37½ "	315 "	80.75

PRICES SUBJECT TO DISCOUNT



Style of Nos. 14 and 15

EDDY CHEST REFRIGERATOR

Zinc Lining. With Separate Ice Chamber and Cover. Thick Walls. Steel Ice Rack and Lock. The Ice Chamber in these chests is placed at one end and separated from the Provision Chamber by a partition, with passages for the circulation of cold air. The No. 14 contains two shelves. The No. 15 four shelves.

OUTSIDE DIMENSIONS AND PRICES

No.	Length	Depth	Height With Casters	Ice Capacity	Shipping Weight	Price
14	38½ inches	22½ inches	31½ inches	65 lbs.	150 lbs.	\$49.00
15	47½ "	23½ "	32½ "	100 "	200 "	61.00

PRICES SUBJECT TO DISCOUNT



Style of Nos. 19, 20 and 21

EDDY GROCERS' CHEST WITH SLIDING COVERS

Zinc Lining. Thick Walls. Steel Ice Rack.

This chest is especially suitable for Grocers, Milk Dealers, Saloons, etc. The Covers slide on ways, one over the other, being convenient for the chest to be placed under counters or shelves.

OUTSIDE DIMENSIONS AND PRICES

No.	Length	Depth	Height With Casters	Shipping Weight	Price
19	43½ inches	22½ inches	30½ inches	165 lbs.	\$55.00
20	49½ "	24½ "	34½ "	230 "	68.75
21	55½ "	27½ "	38½ "	310 "	90.25

PRICES SUBJECT TO DISCOUNT



Style of No. 11

EDDY NURSERY REFRIGERATOR

Fitted with Galvanized Iron Lining.

A very desirable article for use in the nursery, sick-room or dining-room.

The inside is divided into two parts, one for provisions and the other for ice. The ice should be put in the part having a faucet, and not in the Provision Compartment, as that part does not contain any water outlet, and is intended for articles of food only, which are kept perfectly cold by the ice and ice-water in the other compartment. Supplied with Faucet.

OUTSIDE DIMENSIONS AND PRICE

No.	Length	Depth	Height	Ice Capacity	Shipping Weight	Price
11	20 inches	14½ inches	15 inches	16 lbs.	45 lbs.	\$21.50

PRICE SUBJECT TO DISCOUNT